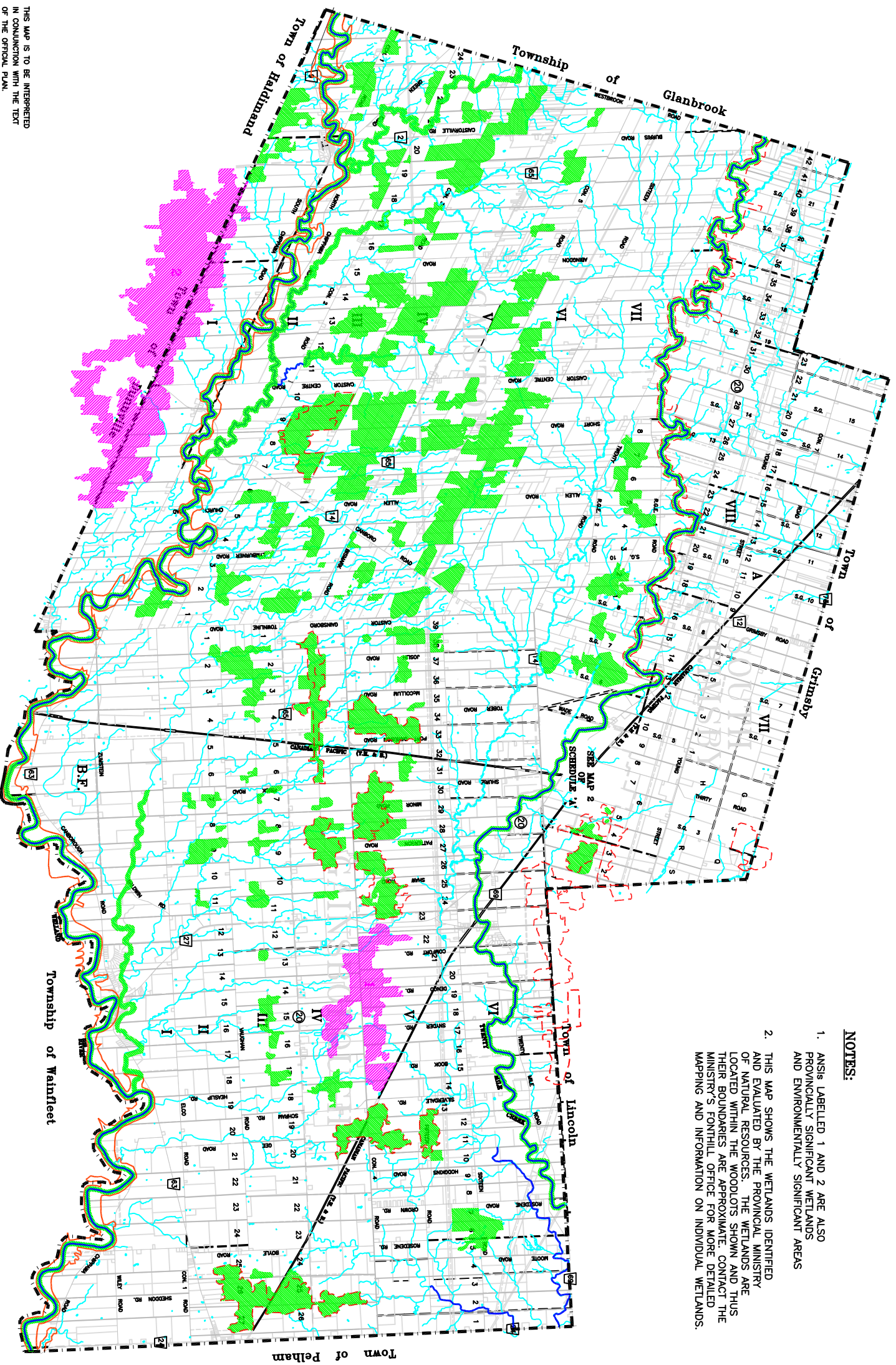
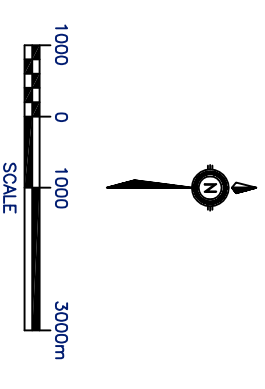


TOWNSHIP OF WEST LINCOLN SCHEDULE 'B' ENVIRONMENTAL PLAN

- NOTES:**
1. ANSIS LABELLED 1 AND 2 ARE ALSO PROVINCIALY SIGNIFICANT WETLANDS AND ENVIRONMENTALLY SIGNIFICANT AREAS
 2. THIS MAP SHOWS THE WETLANDS IDENTIFIED AND EVALUATED BY THE PROVINCIAL MINISTRY OF NATURAL RESOURCES. THE WETLANDS ARE LOCATED WITHIN THE WOODLOTS SHOWN AND THUS THEIR BOUNDARIES ARE APPROXIMATE. CONTACT THE MINISTRY'S FORTNELL OFFICE FOR MORE DETAILED MAPPING AND INFORMATION ON INDIVIDUAL WETLANDS.



- LEGEND**
- TYPE 1 WATERCOURSE
 - - - TYPE 2 WATERCOURSE
 - - - ENVIRONMENTALLY SIGNIFICANT AREAS
 - ▨ PROVINCIALY SIGNIFICANT WETLANDS
 - ▨ PROVINCIALY SIGNIFICANT AREAS OF NATURAL AND SCIENTIFIC INTEREST (LIFE SCIENCE)
 - ▭ HAZARD LANDS-REGULATORY FLOODLINE (WELLAND RIVER)



NOTE: THIS MAP IS TO BE INTERPRETED IN CONJUNCTION WITH THE TEXT OF THE OFFICIAL PLAN.

SOURCE: BASE MAPPING WAS COMPILED WITH INFORMATION FROM THE MINISTRY OF NATURAL RESOURCES AND THE REGIONAL ASSESSMENT OFFICE, CURRENT AS OF - 1996.