

---

**PUBLIC INFORMATION CENTRE # 1  
SMITHVILLE MASTER COMMUNITY PLAN – TOWNSHIP OF WEST LINCOLN**

### **The Study**

The Township of West Lincoln (or the Township) is currently in the process of completing a Master Community Plan Study to plan for future growth in the Community of Smithville (see figure for study area). A subwatershed Study is also being undertaken to address environmental and stormwater considerations associated with the Twenty Mile Creek watershed and support the Master Community Plan Study, including the identification of the preferred area(s) for urban boundary expansion. The Master Community Plan Study was formally introduced to the public at an introductory public information centre (PIC) held on January 30, 2020.

### **Planning Framework**

The Master Community Plan is being developed under the Planning Act and is integrated with the infrastructure planning in accordance with the requirements of the Municipal Engineers Association's Municipal Class Environmental Assessment (EA) for Water, Wastewater and Roads (as amended in 2015) Master Plan Approach #4. This approach is desirable for long term planning where interdependent decisions which impact servicing and land use are being made and the range of servicing alternatives needs to be addressed in an integrated fashion, so as to recommend the best overall solution for the community.

Together with the Environmental Assessment Act, the Master Community Plan will include the location of arterial and collector roads, distribution and density of land uses, water and wastewater (including stormwater) servicing, environmental protection and sustainable design policies. The Plan will identify the preferred approach to phasing that will guide future development and address all infrastructure requirements for the selected urban expansion area(s). The Plan will also support amendments to the Regional Municipality of Niagara and Township of West Lincoln Official Plans.

### **How to Participate in Public Information Centre (PIC) # 1**

The Township invites anyone with an interest in the Study to have an opportunity to provide input and help inform the decision-making process. All consultations are being held virtually to protect the health and safety of participants and the project team due to the COVID-19 pandemic. There are two ways to participate in PIC #1:

#### **1. Join the PIC #1 virtual information meeting (note: registration is required)**

There will be a **Live Information Meeting** held on February 11, 2021 from 6:30 pm to 8:30 pm. The study team will provide an overview presentation of the project and will answer your questions. Individuals can participate online or by phone. PIC #1 will present the purpose and scope of the Study, describe existing and future study area conditions and present the preliminary land use concept options.

**Register for the Meeting** by contacting:

Ryan Lavender  
Communication and Community Engagement Specialist  
AECOM Canada Ltd.  
T. 647.394.5055  
[ryan.lavender@aecom.com](mailto:ryan.lavender@aecom.com)

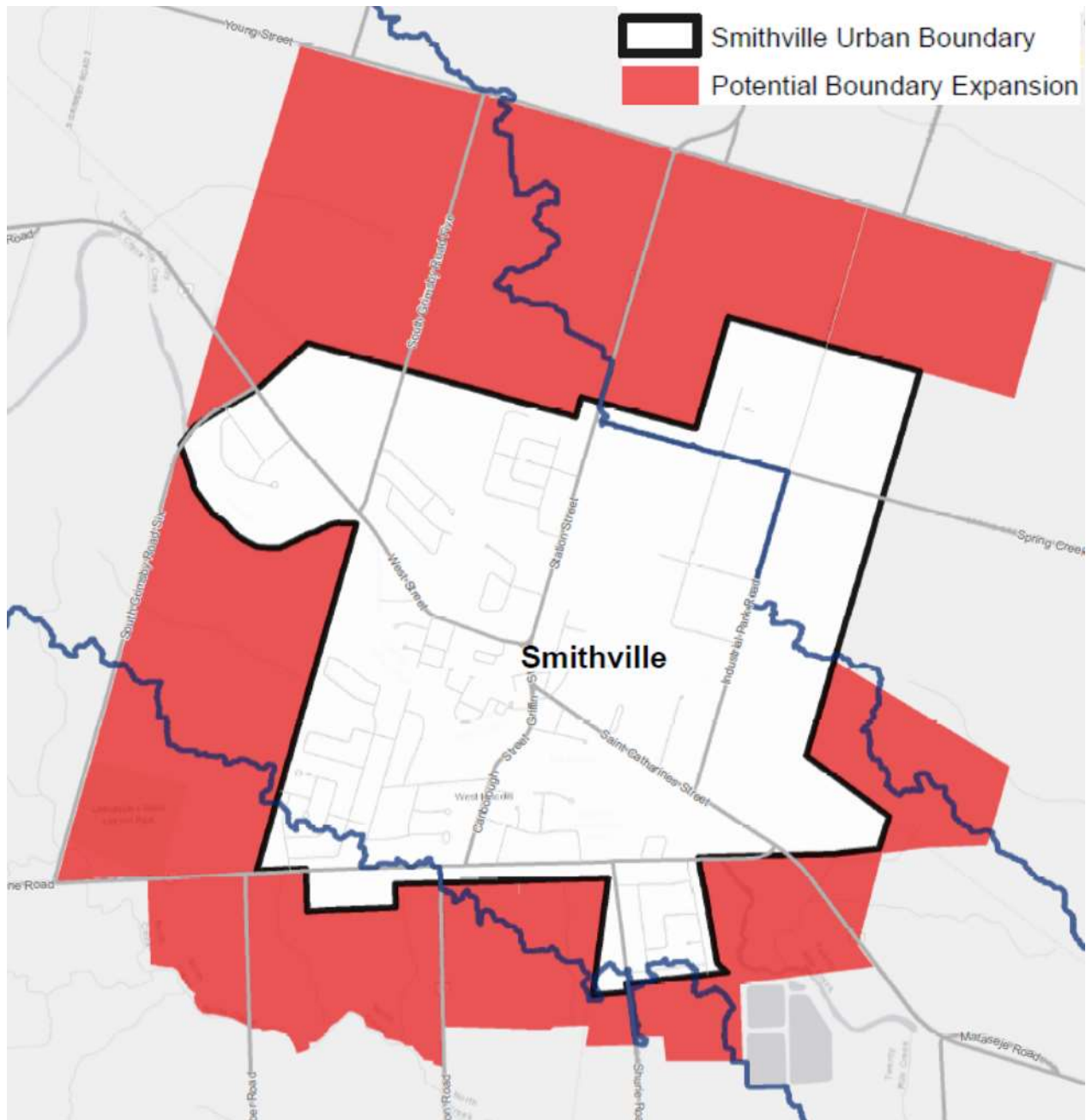
#### **2. Join the online virtual engagement platform**

Join the online virtual engagement platform: [Plansmithville.ca](https://Plansmithville.ca). Content will be available starting February 4, 2021. The online platform will summarize study area conditions and the preliminary land use concept options. The online platform will include an opportunity to provide feedback.

If you require alternative formats, have comments, require further information or would like to be added to the Study's mailing list to receive future notifications, please contact:

Gerrit Boerema  
Planner II  
Township of West Lincoln  
318 Canborough Street  
Smithville ON  
[gboerema@westlincoln.ca](mailto:gboerema@westlincoln.ca)

Raymond Tung, BES, MLA, MCIP, RPP  
Urban Planner  
AECOM Canada Ltd.  
105 Commerce Valley Dr W  
Markham, ON  
[raymond.tung@aecom.com](mailto:raymond.tung@aecom.com)



*With the exception of personal information, all comments will become part of the public record of the Study. The Study is being conducted according to the requirements of the Municipal Class Environmental Assessment, which is a planning process approved under Ontario's Environmental Assessment Act.*

This notice first issued on January 28, 2021