

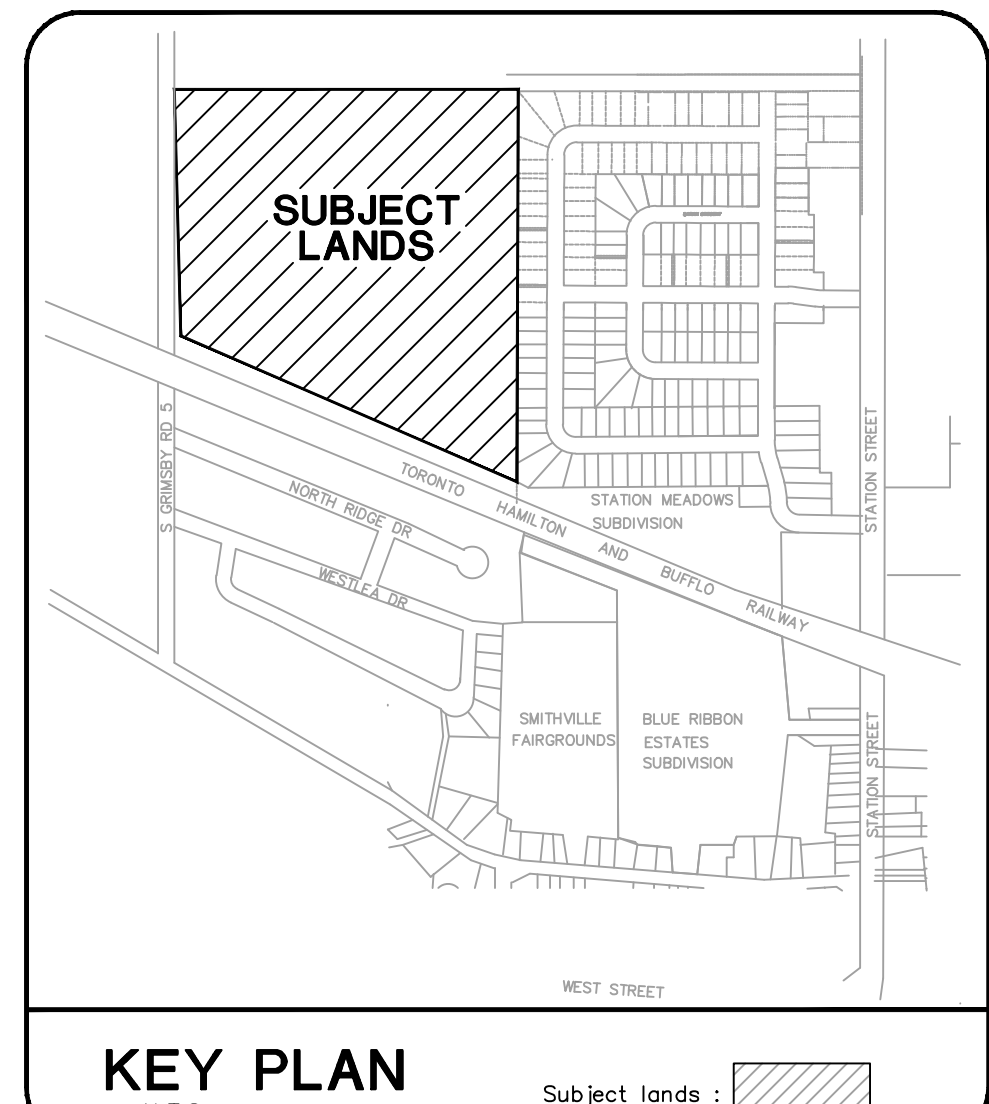
**STATION MEADOWS WEST UNIT COUNT PER PHASE**

UNIT TYPE	PHASE 1	PHASE 2	PHASE 3	PHASE 4	PHASE 5	PHASE 6	PHASE 7	PHASE 8	TOTAL
SINGLE DETACHED	19	0	13	0	0	0	5/+30	16	53/+63
FREEHOLD TOWN HOUSE	12	0	24	48	48	0	12	0	144
BUNGALOW FREEHOLD	18	0	0	0	0	0	0	0	18
APARTMENT UNITS	91	0	0	0	0	0	0	0	91
CONDO TOWN HOUSE	0	30	0	0	0	48	0	0	78
<b>TOTAL</b>	<b>140</b>	<b>30</b>	<b>37</b>	<b>48</b>	<b>48</b>	<b>48</b>	<b>17/50*</b>	<b>16</b>	<b>384/414*</b>

\* INCLUDING FUTURE RESIDENTIAL (30 SINGLE DETACHED)

**LAND USE SCHEDULE**

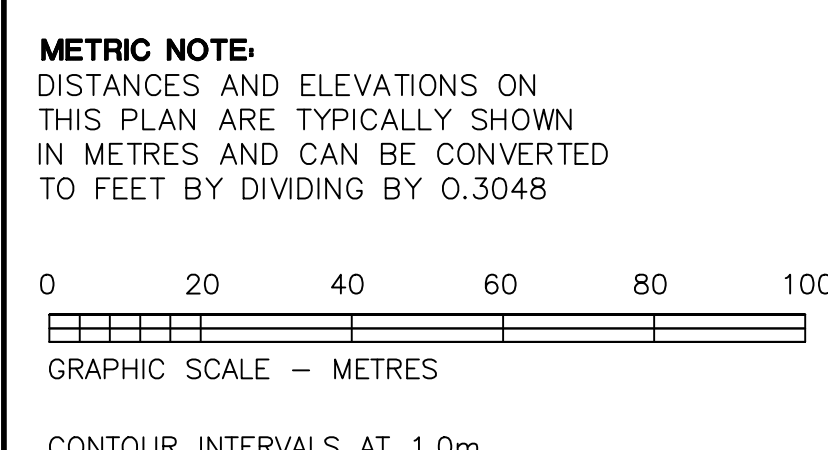
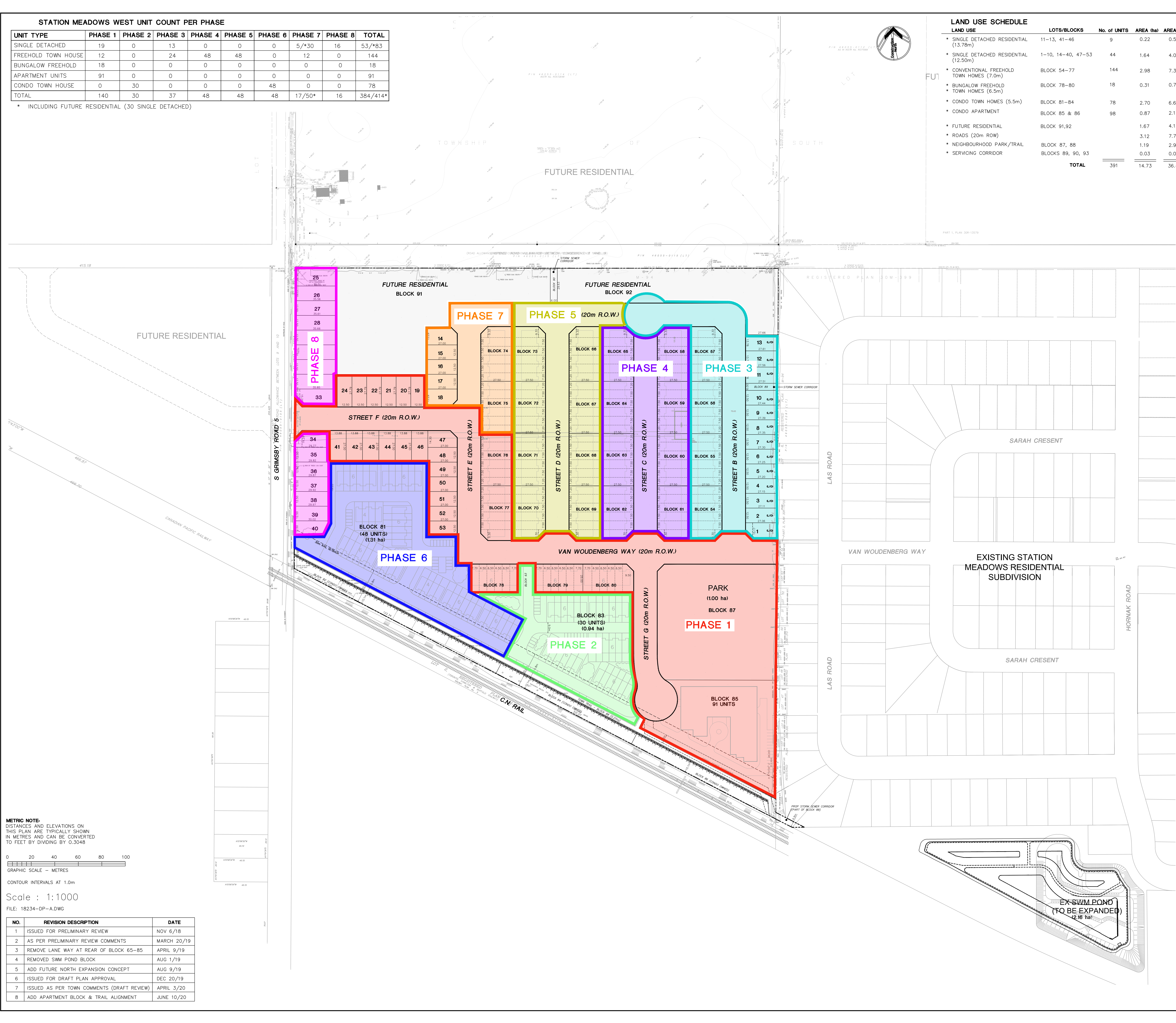
LAND USE	LOTS/BLOCKS	No. of UNITS	AREA (ha)	AREA (ac)
• SINGLE DETACHED RESIDENTIAL (13.76m)	11-13, 41-46	9	0.22	0.56
• SINGLE DETACHED RESIDENTIAL (12.50m)	1-10, 14-40, 47-53	44	1.64	4.05
• CONVENTIONAL FREEHOLD TOWN HOMES (7.0m)	BLOCK 54-77	144	2.98	7.36
• BUNGALOW FREEHOLD TOWN HOMES (6.5m)	BLOCK 78-80	18	0.31	0.77
• CONDO TOWN HOMES (5.5m)	BLOCK 81-84	78	2.70	6.67
• CONDO APARTMENT	BLOCK 85 & 86	98	0.87	2.15
• FUTURE RESIDENTIAL	BLOCK 91,92		1.67	4.13
• ROADS (20m ROW)			3.12	7.71
• NEIGHBOURHOOD PARK/TRAIL	BLOCK 87, 88		1.19	2.94
• SERVICING CORRIDOR	BLOCKS 89, 90, 93		0.03	0.08
<b>TOTAL</b>		<b>391</b>	<b>14.73</b>	<b>36.42</b>



**DRAFT PLAN OF STATION MEADOWS WEST FOR A PROPOSED SUBDIVISION OF PART OF LOT 1 REGISTERED PLAN M-94 TOWNSHIP OF WEST LINCOLN REGIONAL MUNICIPALITY OF NIAGARA**

**ADDITIONAL INFORMATION REQUIRED UNDER SECTION 51 (17) OF THE PLANNING ACT**

A) AS SHOWN ON THE DRAFT PLAN  
 B) AS SHOWN ON THE DRAFT PLAN  
 C) AS SHOWN ON THE DRAFT PLAN  
 D) REFER TO LAND USE SCHEDULE  
 E) AS SHOWN ON THE DRAFT PLAN  
 F) AS SHOWN ON THE DRAFT PLAN  
 G) AS SHOWN ON THE DRAFT PLAN  
 H) MUNICIPAL PIPE WATER SUPPLY  
 I) GLACIOLACUSTRINE SILT AND CLAY, HALTON TILL  
 J) AS SHOWN ON THE DRAFT PLAN  
 K) SANITARY, STORM, MUNICIPAL WATER, HYDRO, GAS  
 L) AS SHOWN ON THE DRAFT PLAN



Scale : 1:1000  
 FILE: 18234-DP-A.DWG

NO.	REVISION DESCRIPTION	DATE
1	ISSUED FOR PRELIMINARY REVIEW	NOV 6/18
2	AS PER PRELIMINARY REVIEW COMMENTS	MARCH 20/19
3	REMOVE LANE WAY AT REAR OF BLOCK 65-85	APRIL 9/19
4	REMOVED SWM POND BLOCK	AUG 1/19
5	ADD FUTURE NORTH EXPANSION CONCEPT	AUG 9/19
6	ISSUED FOR DRAFT PLAN APPROVAL	DEC 20/19
7	ISSUED AS PER TOWN COMMENTS (DRAFT REVIEW)	APRIL 3/20
8	ADD APARTMENT BLOCK & TRAIL ALIGNMENT	JUNE 10/20

**OWNER'S CERTIFICATE**

WE, BEING THE REGISTERED OWNERS OF THE SUBJECT LANDS HEREBY AUTHORIZE THE ODAN/DETECH GROUP INC. TO PREPARE AND SUBMIT A DRAFT PLAN OF SUBDIVISION FOR APPROVAL.

DATED \_\_\_\_\_ AUTHORIZED SIGNING OFFICER  
 P. BUDD DEVELOPMENTS

**SURVEYOR'S CERTIFICATE**

I CERTIFY THAT THE BOUNDARIES OF THE LANDS TO BE SUBDIVIDED AS SHOWN ON THIS PLAN AND THEIR RELATIONSHIP TO ADJACENT LANDS ARE ACCURATELY AND CORRECTLY SHOWN.

DATED \_\_\_\_\_ ONTARIO LAND SURVEYOR

The Odan/Detech Group Inc. P: (905) 632-3811 F: (905) 632-3363  
 5230 SOUTH SERVICE ROAD, BURLINGTON, ONTARIO, L7L 8K2